

# Indomo<sup>®</sup>

Homelifts







# InDomo<sup>®</sup>

## Why a home lift?

Our home lifts are designed to solve the needs of vertical mobility and to remove architectural barriers in all environments, both private and public.

They represent the ideal solution to overcome the stairs and rediscover the pleasure of moving freely in every moment of the day.

They can be installed both inside and outside the building in special metal structures or between the walls of the house.

They ensure a high level of ride comfort, great reliability and total safety, for example guaranteed by the automatic emergency lowering system in the event of a power failure.

They can be installed in new buildings but fit perfectly every existing environments, increasing their value.

## Safety

Thanks to the wide range of specific devices you can move every day around the house without worries.

## Comfort

It can be operated by pressing the button, both in the cabin and on the landings. Choosing the version with automatic sliding or folding doors in the car, you will not have to hold the button pressed during the entire travel.

## Style

Decorate the space in motion by choosing the finishes that best suit your environments and satisfy your taste as you would do for any furnishing accessory. Our renewed range of cabins, Smart - Idea - Style and Opera, best represents the expression of MADE IN ITALY.

## Indoor and outdoor homelifts

InDomo can be installed both inside and outside the building to ensure maximum accessibility at all levels.

If you do not have specific shaft you can connect the lift directly to the balcony or using existing windows modified to obtain the necessary entrances.





## Small elevators for private homes and public environments

Our products find their natural connotation mainly in private homes to help you live fully your environments.

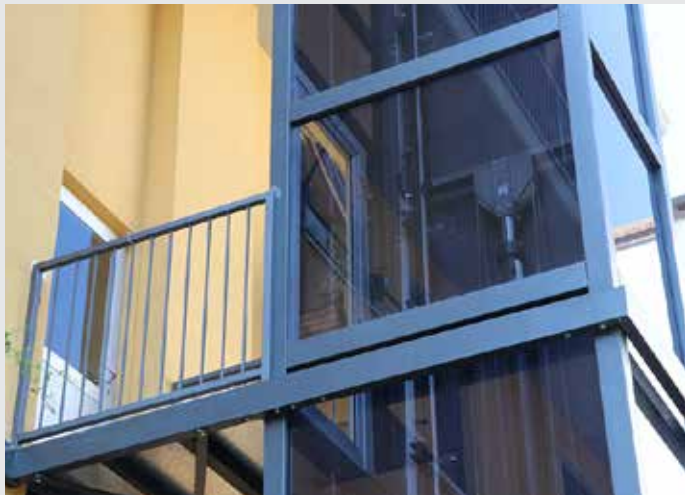
Nevertheless, they are the ideal solution to overcome architectural barriers in public environments like schools, shops, restaurants, offices can guarantee the right solution to all needs.



## Masonry shaft or metallic structure

The lift travels inside a shaft to guarantee the maximum safety, according to the law. The shaft can be obtained inside the house making it in masonry or concrete.

Alternatively we can provide a metal structure designed for indoor or outdoor (since it is weather-proof), certified according to the anti-seismic rules. The structure has multiple finishes and can be completely glazed to ensure good easthetic result, lightness and visibility.



## Swing doors or automatic doors

As standard, InDomo lifting platforms are offered with swing glazed doors that guarantee maximum visibility and passive safety.

They can also be equipped with automatic sliding doors or with internal folding doors and external automatic swing doors (MyDomo) which allow automatic control avoiding to keep the button pressed during the entire travel.







SPECIAL EDITION

# TOTAL BLACK

Elegance  
and great charm

Total Black to guarantee  
elegance and great charm,  
enhancing the most  
particular places.

Each detail is proposed in the desired colour: cabin walls, ceiling, handrail, push-button panel, structure and doors will be painted in an elegant colour. Refined Granit floors in white and black tones will match the design.

SPECIAL EDITION

# TOTAL WHITE

Purity  
and brightness

Total White to give  
purity and brightness  
to any room.



Cabin

# SMART

Beauty  
and simplicity

With its up-to-date, minimalist and yet affordable design, this is LiftingItalia best-selling cabin, now available with new eye-catching skinplate texture finishes.



Full height COP  
in scotch brite ST/ST





Cabin

# IDEA

Elegance  
and flexibility

Bright, fresh and available in a wide colour range, this cabin boasts a plain and youthful design that brings sparkle to its surroundings. IDEA is the cabin designed specifically for panoramic lifts and offers the possibility of having up to three glass walls.



Full height COP in  
anodized aluminum

Internal car profiles  
in anodized aluminum

External wall cladding  
in anodized aluminum



Cabin

# STYLE

Timeless style

The material combinations are designed to exalt the enduring look of the stainless steel, which enhance both classic and modern environments.



Full height COP in polished Mirror ST/ST





Cabin

# OPERA

Warmth and  
accessible luxury

We chose a selection of the most interesting contemporary design materials, to create a uniquely refined cabin design.



3/4 height COP  
in anodized aluminum

Internal car profiles  
in anodized aluminum

External wall cladding  
in anodized aluminum

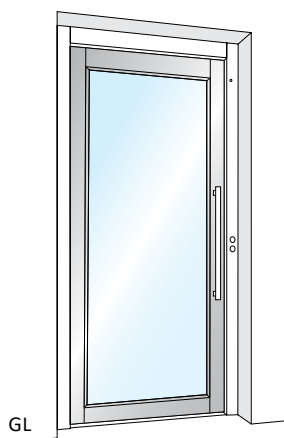




# Doors

## LINE DOOR

Single panel swing door



Aluminum  
Handle  
Height 700 mm  
Cod. ML.05  
(Standard)

Single panel swing door; **manual opening and automatic closing.**

Available versions:

- GL (glazed - standard)

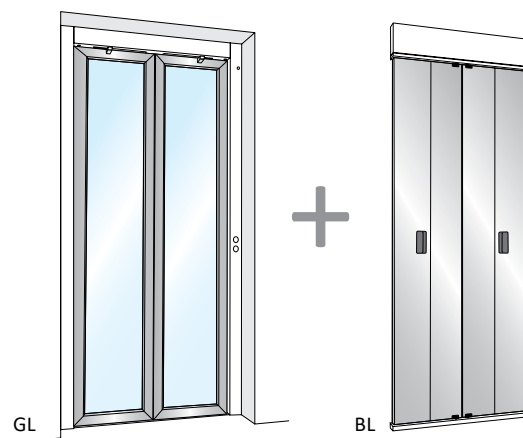
- Landing door finishes:  
**Silver anodized aluminium (standard) and Painted steel**



Stainless Steel  
Handle  
Height 700 mm  
Cod. ML.06  
(Optional)

## AUTOMATIC DOORS KIT MYDOMO-PACK

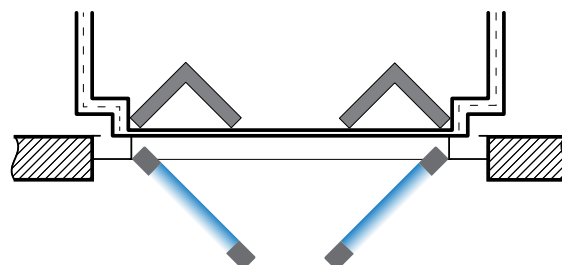
Double panels swing automatic landing door



Double panels swing landing door coupled with a folding car door **completely automatic in opening and closing** operations. A safety device stops the movement in case of obstruction.

MyDomo landing door and Twist folding car door are also available:

- BL (blind)  
- GL (glazed)

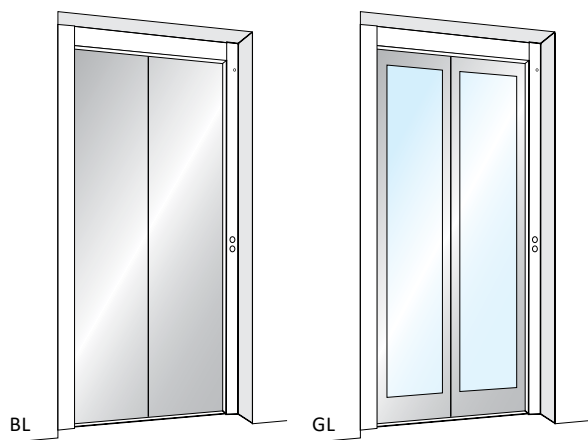






## 2 PANELS AUTOMATIC

### Centre opening door



Car and landing 2 panels **automatic centre opening** door with safety device to re-open in case of obstructions.

Versions:

- BL (blind - standard)
- GL (glazed)

Available also:

- Fire rated E120
- Fire proof EI120

- Standard finishes:

**F12PPS - A80SMA - PPS10 - DT 65 Skinplate**

- Optional finishes:

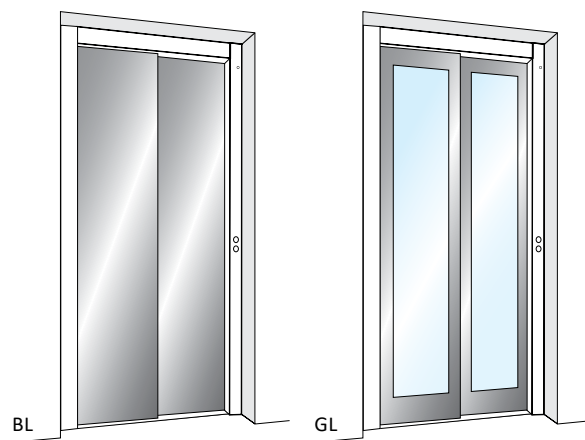
**Stainless Steel and Painted steel**

- Entry-level finish:

**RAL 7032 smooth and repaintable primer**

## 2 PANELS AUTOMATIC

### Side opening door



Car and landing 2 panels **automatic side opening** door with safety device to re-open in case of obstructions.

Versions:

- BL (blind - standard)
- GL (glazed)

Available also:

- Fire rated E120
- Fire proof EI120

- Standard finishes:

**F12PPS - A80SMA - PPS10 - DT 65 Skinplate**

- Optional finishes:

**Stainless Steel and Painted steel**

- Entry-level finish:

**RAL 7032 smooth and repaintable primer**

# COP

## COP STANDARD CONFIGURATION

- ☞ Braille push buttons
- ☞ Alarm button
- ☞ Luminous and acoustic overload signal
- ☞ Door open push button (only with automatic doors)
- ☞ Emergency STOP button (only without car doors)
- ☞ Emergency light
- ☞ Two-way intercom

## PUSH BUTTONS

- ☞ The push button (Ø 29,6 mm) features Braille code
- ☞ Blue backlight
- ☞ Dimensions with bezel 42 x 38 mm
- ☞ Matt stainless steel/gold finish



## OPTIONS

- ☞ Enabling key
- ☞ Magnetic iButton key
- ☞ Position and direction displays
- ☞ Phone dialler
- ☞ Wall phone
- ☞ In-built telephone box (where possible)
- ☞ LCD Display (5,6")
- ☞ TFT Display (7")



## Display

### CAR DISPLAY - OPTIONAL



**TFT (7")**  
Without frame  
Dimensions:  
154 x 86 mm



**Tricolor LCD (5,6")**  
With metal frame  
Dimensions:  
120 x 60 mm

### LANDING DISPLAY - OPTIONAL



Car position  
display  
with frame  
mounted  
on the transom



On the wall  
With metal  
frame



# Ceilings

## PLEXY CEILING

not backlighted (standard)



- Standard ceiling for **SMART - IDEA - OPERA** cars
- Standard finishes: **Scotch Brite Stainless Steel** and **Anodized aluminium**
- Optional finishes: **Mirror Stainless Steel**

## COUNTER-CEILING QUADRO

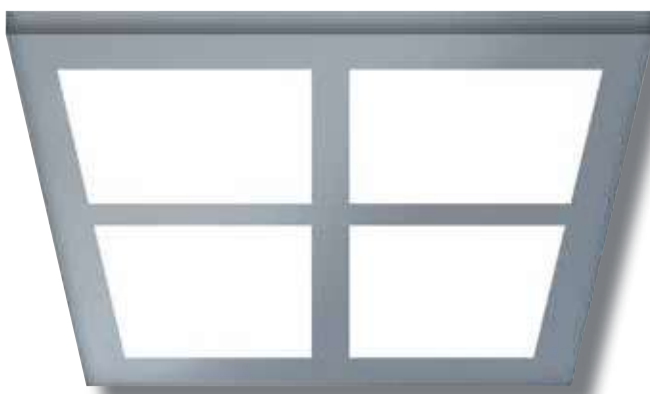
backlighted



- Standard counter-ceiling for **STYLE** car
- Optional counter-ceiling for **SMART - IDEA - OPERA** cars
- Standard finishes: **Scotch Brite** or **Mirror Stainless Steel**

## COUNTER-CEILING WINDOW

backlighted



- Standard counter-ceiling for **STYLE** car
- Optional counter-ceiling for **SMART - IDEA - OPERA** cars
- Standard finishes: **Scotch Brite** or **Mirror Stainless Steel**

## COUNTER-CEILING SPOTLIGHTS

with LED spot lights

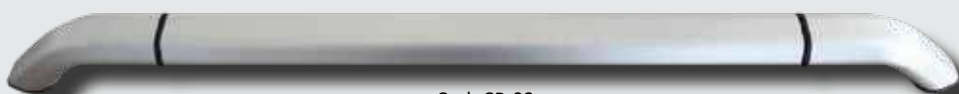


- Standard counter-ceiling for **STYLE** car
- Optional counter-ceiling for **SMART - IDEA - OPERA** cars
- Standard finishes: **Scotch Brite** or **Mirror Stainless Steel**

# Handrail

Modular aluminum handrails with the following finishes:

- natural anodized aluminum  
Cod. CR.03
- aluminum stainless steel effect  
Cod. CR.04



Cod. CR.03



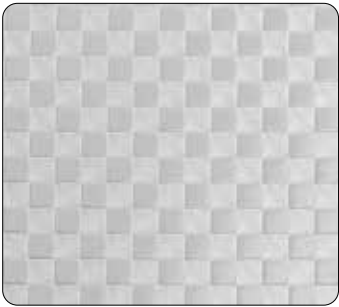
Cod. CR.04

# Finishes - Stainless Steel

For car walls and automatic doors



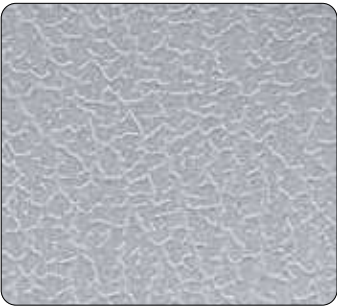
**Satin Gr. 240**  
Stainless Steel



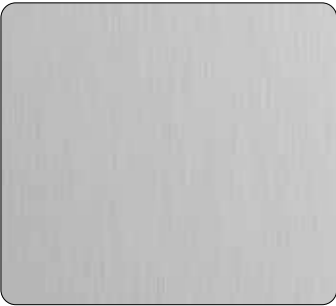
**D21 Square**  
Stainless Steel



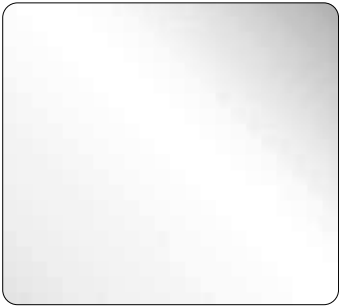
**D25 Linen**  
Stainless Steel



**D42 Leather**  
Stainless Steel

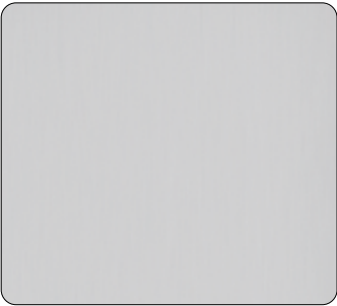


**Scotch Brite**  
Stainless Steel



**Mirror**  
Stainless Steel

For LINE doors



**Anodized aluminium**

# Finishes - Skinplate

For automatic door and IDEA and SMART cars (\* cars only)



**DT 63 \***  
Rough Fabric



**DT 64 \***  
Kaki Fabric



**DT 65**  
Grey Fabric



**A80SMA**  
White Ice



**A90GTA \***  
Cream - Canvas effect



**F12PPS**  
Stainless-Look



**PPS10**  
Marble



**F21PVA \***  
Dotted Silver



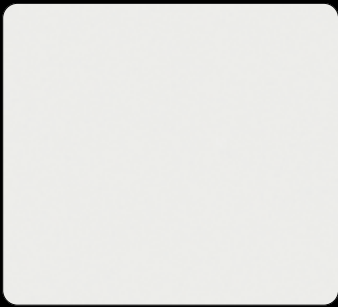
# Finishes - Laminate HPL

## MONOCHROMATIC FINISHES - For IDEA and OPERA cars



**SUPER MATT**

Soft to the touch for an innovative effect



**2904**

White ice - Polaris




**2910**

Light grey - Polaris



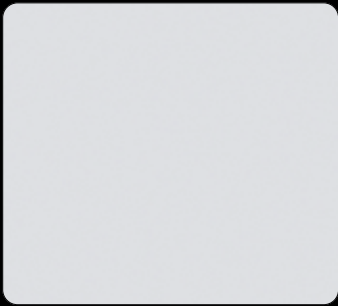
**2902**

Black - Polaris



**SEI**

Opaque and pleasant to the touch: just classic




**410**

White ice



**414**

Sand



**868**

Medium grey

## MATERIAL FINISHES - For IDEA and OPERA cars



**WOOD EFFECT**

Inspired by nature, it enhances its aesthetic qualities




**1385** - Vertical Texture

White Ash



**1381** - Horizontal Texture

Transversal Oak



**1389** - Vertical Texture

Noce Iseo



**TROWELED EFFECT**

Pleasant to the touch, elegant to the eye



**558**

Ostuni



**557**

Ostuni



**421**

Ostuni

# Finishes - Floors

## GRANITE AGGLOMERATE



**GRANIT 607**  
Polar Ice



**GRANIT 431**  
White



**GRANIT 2402**  
Dove Tail



**GRANIT 646**  
Black Diamond

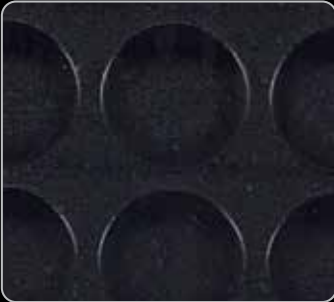
## ROUND STUDED RUBBER



**GRANIT 663**  
Vetro Moretti



**G804**  
Light Grey



**N004**  
Black

## PVC “ETERNAL COLLECTION”



**13772**  
Eternal Brushed Aluminium



**13712**  
Eternal Brushed Chrome



**42292**  
Eternal Charcoal Slate

## ALUMINIUM



5 bar aluminium tread plate

# Finishes - Glasses and mirrors



**Natural**  
- Standard

**Acid**  
Etched

**Natural**  
Milky White

**Smoke Grey**

**Smoke Bronze**

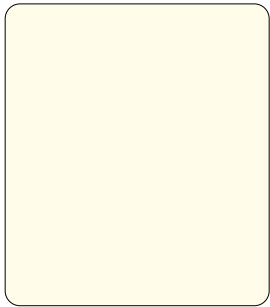
**Bronze Stopsol**

**Mirror**

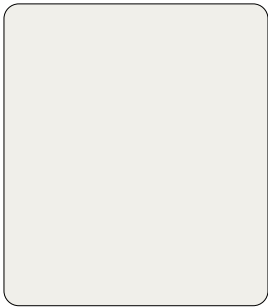


# Finishes - Paints

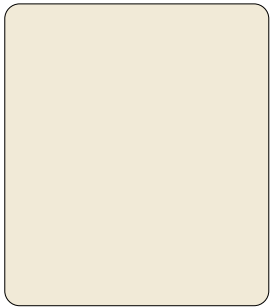
## CRINKLED FINISH



**RAL 9010**  
Pure white



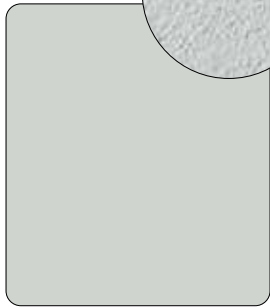
**RAL 9016**  
Traffic white



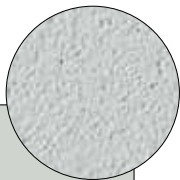
**RAL 1013**  
Oyster white



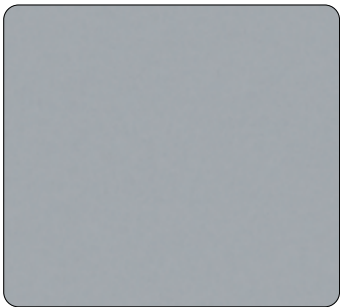
**DESERT ROSE**  
Sand



**RAL 7035**  
Light grey



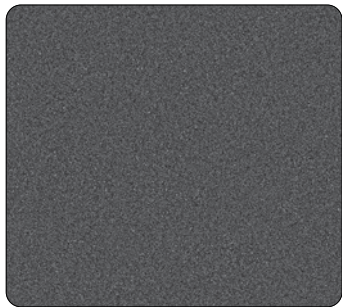
**RAL 7001**  
Silver grey



**RAL 9006**  
White aluminium



**RAL 9007**  
Grey aluminium



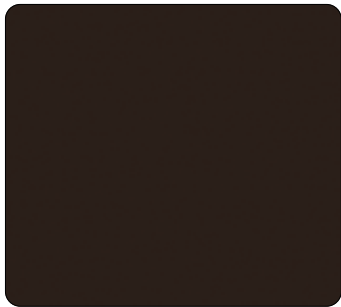
**GREY MICA**  
Grey mica



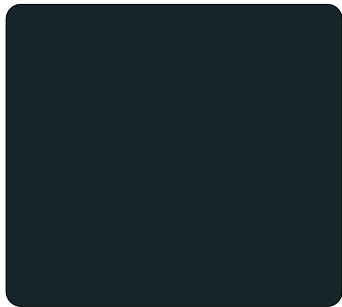
**BLASTED COPPER**  
Copper



**ANTIQUE RUST**  
Corten

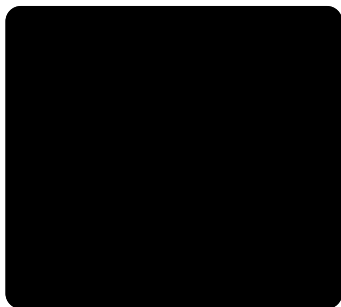


**RAL 8019**  
Grey brown



**RAL 7016**  
Anthracite grey

## SMOOTH FINISH



**RAL 9005**  
Jet black



**BRONZE - Y540NE3**  
Metallized Bronze

## SMOOTH FINISH



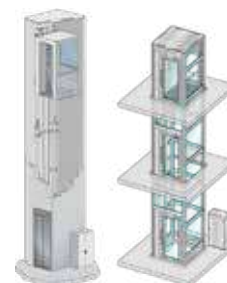
**GOLD - K500Y08**  
Metallized Gold

## OPTIONAL



**RAL painting**  
Complete RAL range

# Overall installation configurations



## PRODUCT SPECIFICATIONS

## InDomo

MAX PAYLOAD	500 kg
MAX TRAVEL	20 m
MAX ENTRANCES	3
MAX STOPS (in line)	8

## SHAFT

CONCRETE OR MASONRY	■
STEEL STRUCTURE, PAINTED RAL	□
STAINLESS STEEL STRUCTURE (AISI 304 or AISI 316 FOR MARINE ENVIRONMENT)	□

## CARS

SMART	■
STYLE	□
IDEA	□
OPERA	□
1 GLASS WALL	□
2 GLASS WALLS	□

## CAR DOORS

WITHOUT DOOR (with LIGHT CURTAIN)	■
AUTOMATIC SLIDING, 2-PANELS SIDE OPENING (BL-GL)	□
AUTOMATIC SLIDING, 2-PANELS CENTRE OPENING (BL-GL)	□
AUTOMATIC TWIST FOLDING 2-PANELS (BL-GL)	—
AUTOMATIC TWIST FOLDING 4-PANELS (BL-GL)	□

## LANDING DOORS

LINE GL - ALUMINIUM (GLAZED version)	■
IRON - STEEL (BL <sup>1</sup> )	■
MyDOMO pack (coupled with TWIST) (GL-BL)	□
AUTOMATIC SLIDING, 2-PANELS SIDE OPENING (BL-BL <sup>1</sup> -GL)	□
AUTOMATIC SLIDING, 2-PANELS CENTRE OPENING (BL-BL <sup>1</sup> -GL)	□

## HYDRAULIC TRACTION

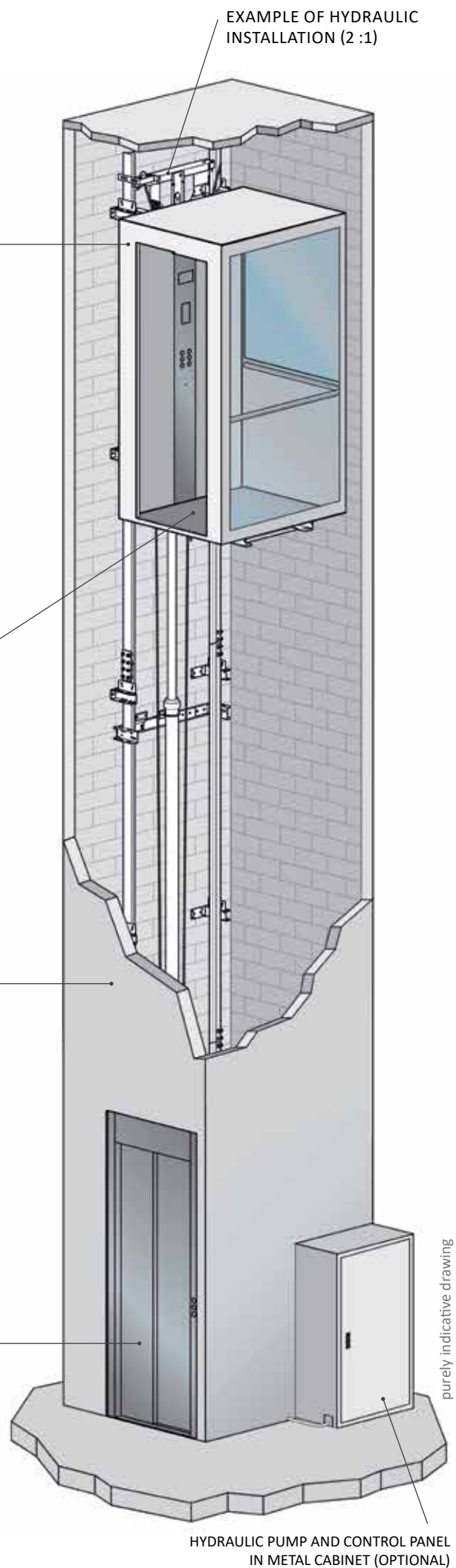
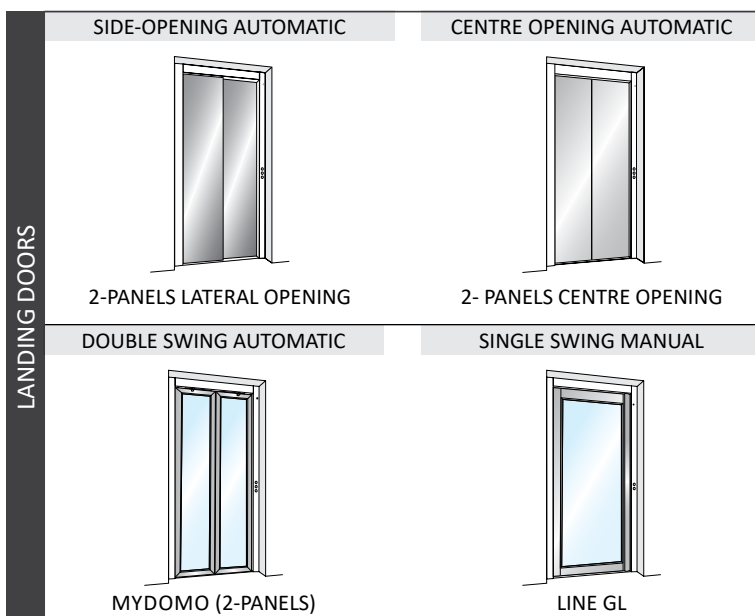
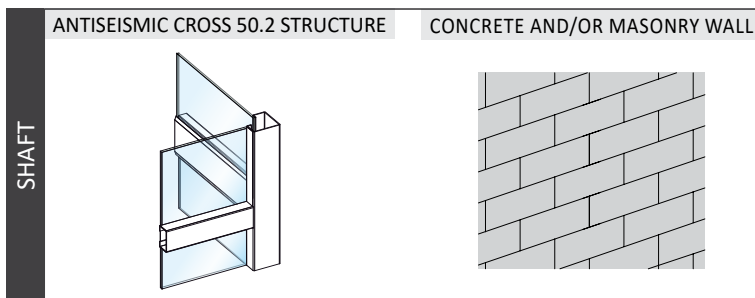
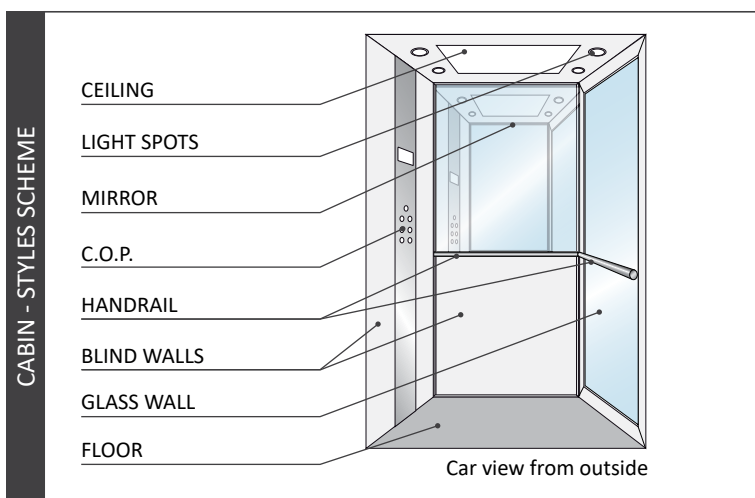
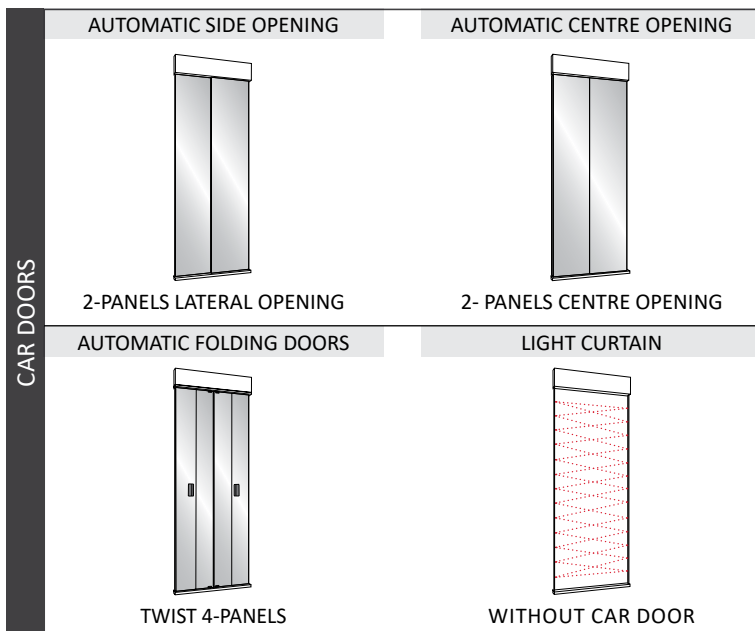
Indirect acting 2:1	■
Side direct acting 1:1	☒

(1) available also E120 and FIRE RATED EI120 executions

LEGEND	■ Standard	☒ Option, no extra price	□ Optional	— Not available
	BL: BLIND version	GL: GLAZED version		

AVAILABLE ALSO WITH  
AISI 316 STRUCTURE FOR  
MARINE ENVIRONMENT





# InDomo masonry shaft



Outdoor



Indoor



Suggested  
use



Suggested  
use



Max payload



230 VAC  
single phase

## STRENGTH AND RELIABILITY

InDomo means reliability and safety. Thanks to the hydraulic traction, to the solid structure and to the safety devices (blackout emergency descent, automatic rescue call and much more) you will never have to fear of being stuck in the cabin.

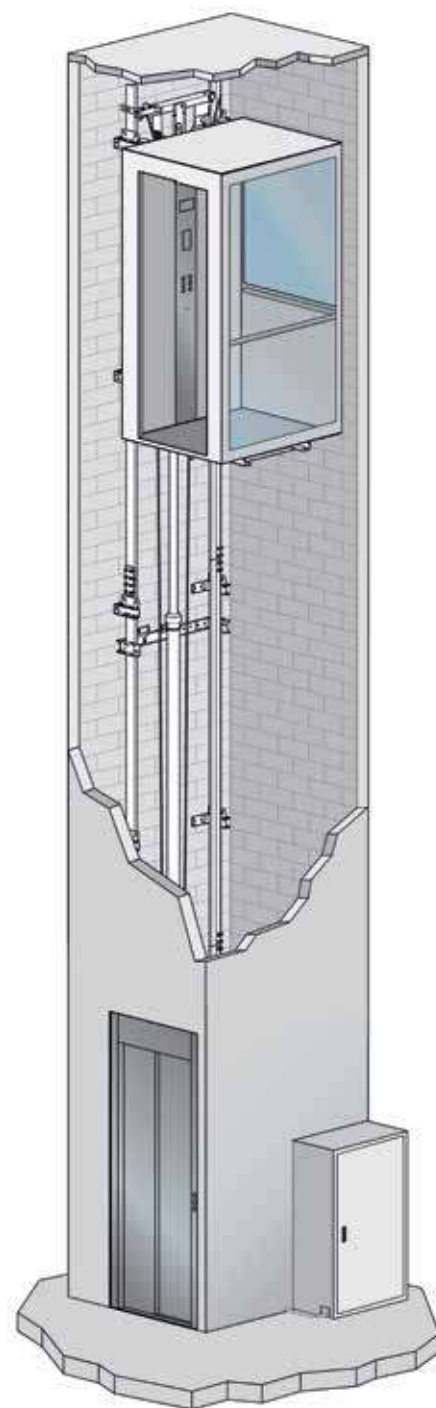
## TOP COMFORT AT THE BEST PRICE

InDomo is the mini-lift for those who don't accept compromises. Top comfort and quietness, smooth starts and stops, great lighting and best technologies create the best travel experience in the category.

## LIVING SPACE

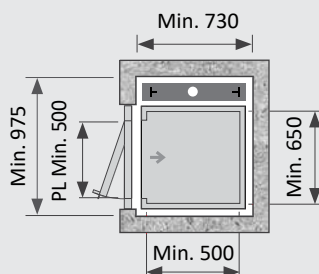
The new range shows a completely renewed line of cabins, with a clean and essential design which will give your house an unmistakable touch of elegance.

PAYLOADS	From 250 up to 500 kg
TRAVEL	Up to 20 m
STOPS	Up to 8 (in line)
ENTRANCES	Up to 3
SPEED	0,15 m/s (EU) - 0,30 m/s (extra-EU)
SHAFT	Masonry shaft or Anti-seismic structure
CONTROL	Hold to run or Automatic
NOISE LEVEL	Max. 47 dB
CABIN DIMENSION	Max. 1400 (L) x 2000 (P) *
CABIN HEIGHT (CH)	Std. 2100 mm (Min. 2000 - Max. 2200)
DOOR HEIGHT (LH)	Std. 2000 mm (Min. 1800 - Max. 2100)
HEADROOM (LH 2000)	Min. 2300 mm - Max. 2570 mm
PIT	Min. 100 mm - Max. 500 mm
CYCLES/HOUR SUGGESTED	15
POWER SUPPLY	Single phase 230 Vac (3-phase 400 Vac as option)
CONTROL PANEL AND HYDRAULIC SYSTEM	In metal cabinet (optional)
REFERENCE REGULATION	D.M. 2006/42/CE - EN81.41

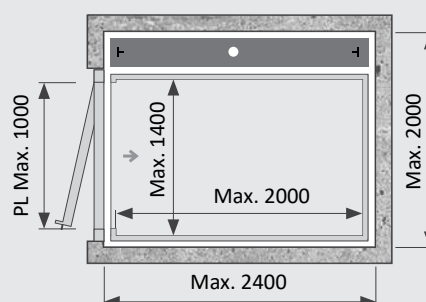


## CUSTOM DIMENSIONS WITH 5 MM STEPS

### MIN DIMENSIONS



### MAX DIMENSIONS



\*Min. and max. reference values  
cannot be configured together (subject to feasibility study)



# InDomo

## metallic structure 50.2



Outdoor



Indoor



Suggested  
use



Suggested  
use



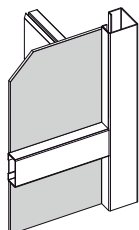
Max payload



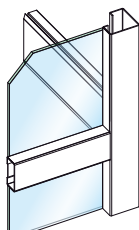
230 VAC  
single phase

### STRENGTH AND BEAUTY

CROSS 50.2 2 is a steel structure for lift and lifting platform, suitable to be placed both inside and outside the building, consisting of bolted uprights and connecting crosspieces, bolted, prepared for fixing glasses or panels from inside the structure. The CROSS 50.2 structures are tested according to the NTC2008 standards for installations in seismic zones. It has clean lines that suit all environments, both outdoor and indoor. Thanks to this structure, expensive masonry work is no longer necessary except for landing on the floor in case it was not planned.

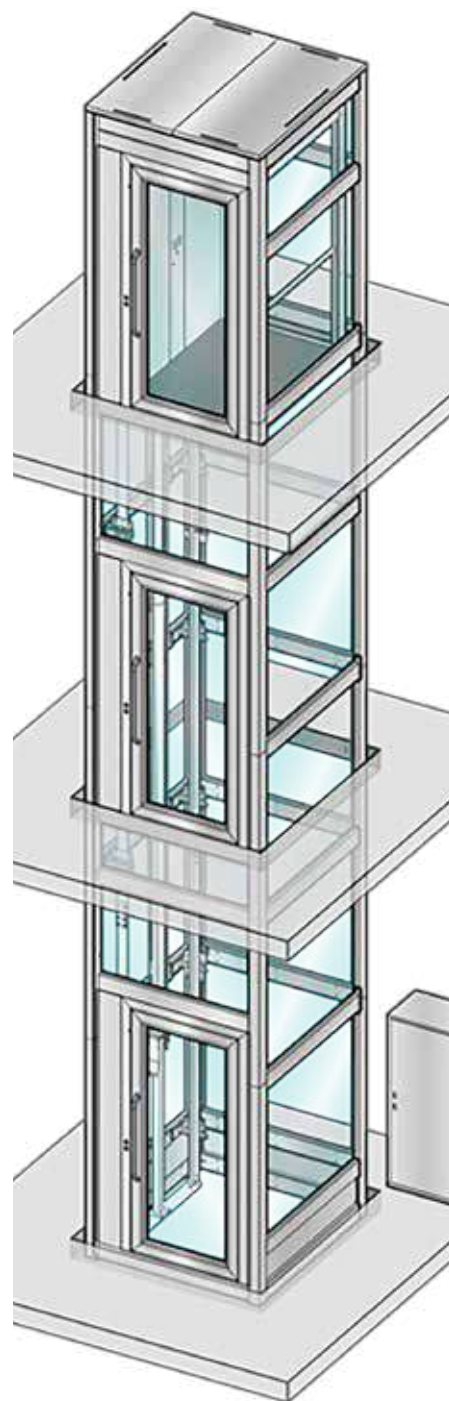


BL: blind version



GL: glazed version

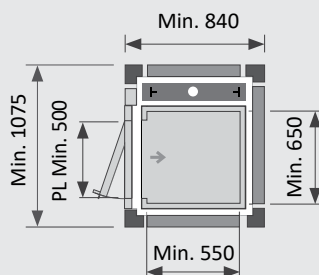
PAYLOADS	From 250 up to 500 kg
TRAVEL	Up to 20 m
STOPS	Up to 8 (in line)
ENTRANCES	Up to 3
SPEED	0,15 m/s (EU) - 0,30 m/s (extra-EU)
SHAFT	Masonry shaft or Anti-seismic structure
CONTROL	Hold to run or Automatic
NOISE LEVEL	Max. 47 dB
CABIN DIMENSION	Max. 1400 (L) x 2000 (P) *
CABIN HEIGHT (CH)	Std. 2100 mm (Min. 2000 - Max. 2200)
DOOR HEIGHT (LH)	Std. 2000 mm (Min. 1800 - Max. 2100)
HEADROOM (LH 2000)	Min. 2300 mm - Max. 2570 mm
PIT	Min. 100 mm - Max. 500 mm
CYCLES/HOUR SUGGESTED	15
POWER SUPPLY	Single phase 230 Vac (3-phase 400 Vac as option)
CONTROL PANEL AND HYDRAULIC SYSTEM	In metal cabinet (optional)
REFERENCE REGULATION	D.M. 2006/42/CE - EN81.41



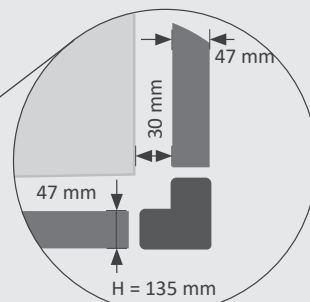
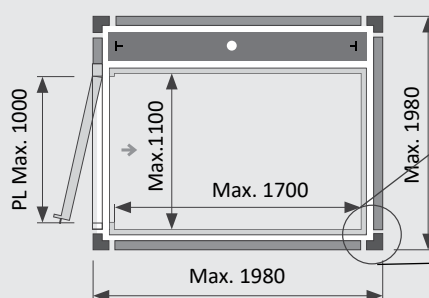
CUSTOM DIMENSIONS  
WITH 5 MM STEPS

AVAILABLE WITH STAINLESS STEEL AISI316

### MIN DIMENSIONS



### MAX DIMENSIONS



\*Min. and max. reference values cannot be configured together (subject to feasibility study)

# InDomo®

*Homelifts*



LIFTING ITALIA S.r.l.  
Via Caduti del Lavoro, 16  
43058 Bogolese di Sorbolo (Parma)  
Tel. 0521 695311  
[www.liftingitalia.com](http://www.liftingitalia.com)



MADE IN ITALY

